

**Accelerating the use
of AI for the benefit
of our society,
our competitiveness,
and for everyone
living in Sweden**

**AI Sweden
Partner prospect**

“

It is all about speed - AI Sweden has established projects and world-class labs in almost no time, enabling us to participate in the development at the very forefront of AI technology”

Partner testimonial



Accelerating the use of AI

By investing together in knowledge and resources that can be shared and accessed by many, and by collaboratively increasing Sweden's attractiveness for talent, we can achieve substantial impact for individual organizations as well as the AI ecosystem as a whole.

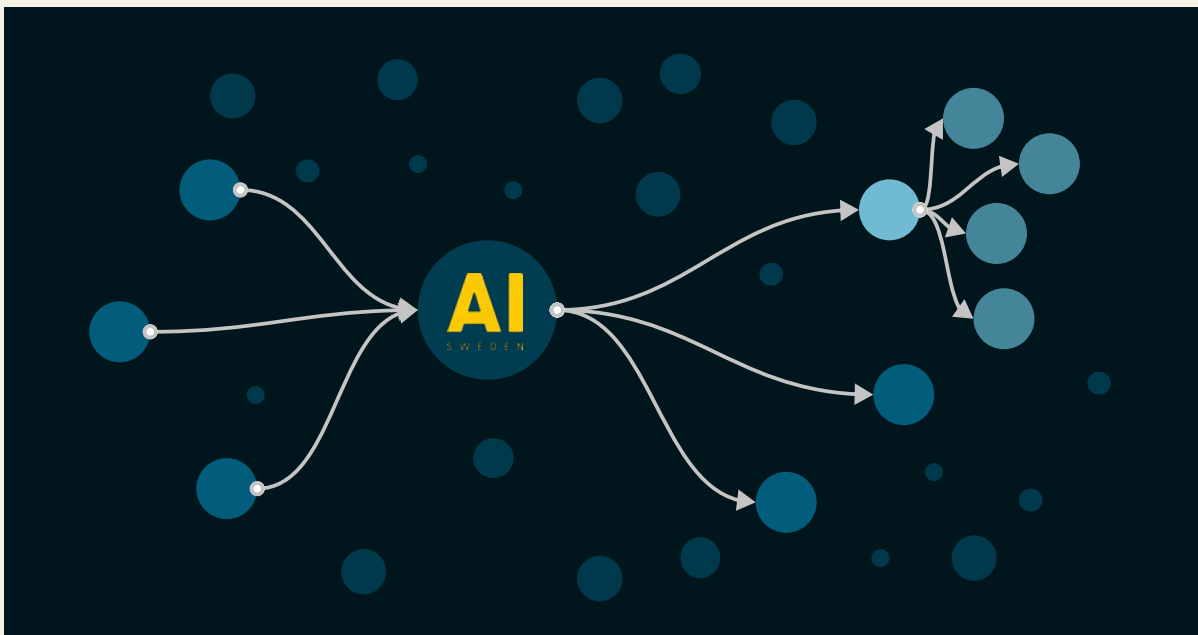
AI Sweden is accelerating the use of AI by:

- 1 Catalyzing collaboration within a cross-sector partner network of over 100 organizations** including big corporations, SMEs, startups, public organizations, and academic/research institutes.
- 2 Generating sharable knowledge and resources** such as solutions, best practices, labs, infrastructure, models, research results and tools that can be accessed by many.
- 3 Attracting and boosting talent** building their careers at our partners. Our ambition is to attract at least 100 people by the end of 2022.
- 4 Providing leadership for scientific, technological and societal advancement**, pushing the boundaries of applied AI.

To maximize value for our partners, AI Sweden learns from the best internationally, adapts and continuously improves, and focuses its resources on areas with the highest potential impact. Together with partners, AI Sweden invests in Strategic Initiatives that are essential for the Swedish AI ecosystem and for profiling Sweden internationally. Specific areas of applied AI, such as language technologies, decentralized AI and organization development for AI are all essential for the Swedish AI ecosystem.

Our mission is to accelerate the use of AI for the benefit of our society, our competitiveness, and for everyone living in Sweden.

AI Sweden is the Swedish national center for applied artificial intelligence (AI), supported by Vinnova, Sweden's innovation agency, and partners from both private and public sector as well as academia.

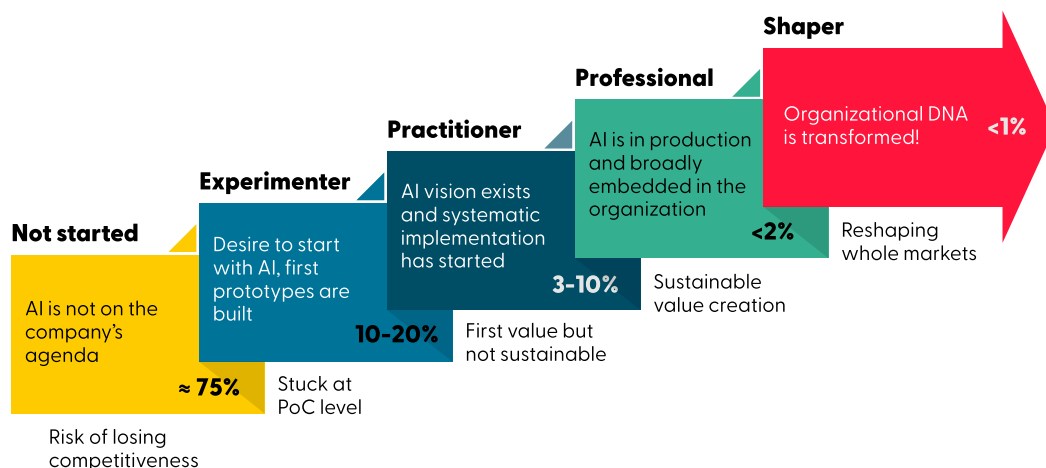


AI Sweden is about scaling and sharing knowledge and resources: solutions, best practices, labs, infrastructure, models, research results and tools that can be accessed by many.

AI Sweden accelerates the use of AI in Sweden by investing together and sharing with many. As a result of this strategy, partners can leverage the contributions of others to accelerate their own work.

Are you a user of AI applications? A producer of AI solutions?

Assessing your organization's current situation is a key step to benchmark improvements and identify which areas to focus on. Where would you map your organization in this AI maturity model?



AI Maturity Model (adopted from Initiative for Applied AI, Germany)

No matter how far your organization has gotten, AI Sweden provides resources that range from introductory training courses to world-leading labs that makes it possible to push the boundaries of applied AI. Our partners range from multinational companies, SMEs, startups, regions, municipalities, and governmental agencies, universities and research institutes. Sharing knowledge and collaborating across sectors is crucial and the AI Sweden spectrum of activities provides an opportunity to do this.

From an operational perspective, our partners share a strong need for shared knowledge and resources when it comes to:

- identifying use cases and value generating opportunities with AI
- keeping up to date with new developments in the field
- making bold innovations
- reducing risk in development projects and infrastructure investments
- attracting and developing talent.

Partners to AI Sweden all share a belief that AI will profoundly impact our society, economy, and democracy, and therefore will play an important role for competitiveness, business, organization, productivity and public services to citizens.

Collaboration is key to successfully deploy AI

The community of AI Sweden partners constitutes a vast network and ecosystem of organizations and individuals with a diverse set of perspectives, knowledge and experience. By leveraging this network, partners can collaborate and use assets that they would otherwise not be able to access.

The Networking Programs provide platforms for identifying common needs and challenges, both from an organizational and individual perspective. The Networking Programs are also intended to be a productive way to drive joint efforts and shared solutions.

Some of the current networking opportunities are listed in the table below.

Network Program	What is it?	Who is it for?
Executive AI Accelerator	A forum to discuss opportunities, challenges and cross-industry collaboration.	Executives at our corporate partners
Startup Program	A dedicated program for AI focused startups.	Startup partners
Regional Forces for AI	A forum to discuss experience, opportunities, challenges and collaboration.	Partner regions
Network for Municipalities	A forum to discuss experience, opportunities, challenges and collaboration.	Partner municipalities
Governmental Agency Network	A forum to discuss experience, opportunities, challenges and collaboration.	Partner governmental agencies
Focus Group Law	A forum to share legal cases and discuss challenges.	Partners
AI Catalyst Network	A forum to share experiences of practical implementations of AI in organizations when it comes to culture and transformation.	Change agent roles at partners
Training & Learning Reference Group	A network to strengthen training and learning in relation to applied AI.	Managers responsible for upskilling

AI Sweden also offers co-location offices where our team, our partners and our project members can meet and collaborate.

[Read more about AI Sweden's partner networks.](#)

Shareable knowledge and resources

Our shareable knowledge and resources allow partners to advance their AI development by, for example:

- better understanding their organization's AI maturity and take actions accordingly
- upskilling their teams by training courses
- accessing world-class labs for AI development specifically
- testing and evaluating purpose-built infrastructure for AI model training
- accessing real-world data sets shared by other partners
- participating in concrete applied projects generating new insights, reusable models and best practises for legal management
- performing applied AI research in collaboration.

AI Sweden believes that AI implementation is just as much about business, applications and people as about technology.

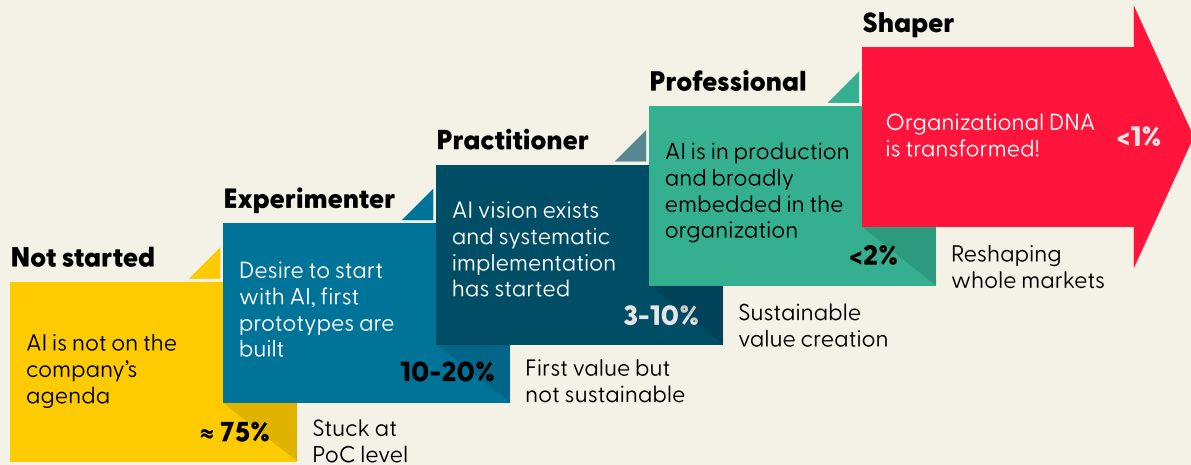
Organizations successfully generating value by AI typically align their entire organization including top management, sales and business/organizational development, legal, product/service development, research, data science and software development.

At AI Sweden, a team called **AI Transformation** provides support when it comes to business and organizational matters.

Data Factory and **Applied AI teams** support the AI implementation projects.

AI Transformation

AI Transformation is about the journey from the current state of AI maturity to using AI as a strategic transformative asset.



Risk of losing competitiveness

AI Maturity Model (adopted from Initiative for Applied AI, Germany)

The AI Sweden team together with partners provide a range of tools, training courses and best practices to adapt partners' mindsets and organizations to better generate value from AI.

AI Transformation focuses on the capabilities needed in an organization to fully embrace and integrate AI to create real benefits and value. This is not just about data and technology but more about organization, culture, competence, ecosystems and where you want to be as an organization.



AI Transformation offerings for partners

At AI Sweden we understand the complexity and the challenges this brings and help our partners offering hands-on actions to accelerate the AI journey.

Our offerings are based on long experience in the field of AI and digital transformation, combined with change management, as well as through collaborations with international research institutes and our partners.

Offering	Description	Partner opportunity
AI Maturity Assessment	A structured and well-tested tool used in 8 EU countries to measure an organization's maturity in AI. Used as a starting point for systematic AI implementation.	Find out where your strengths and weaknesses are in nine different domains and benchmark with industry.
AI change agent team	A team of trained change management professionals with a focus on the specifics of AI transformation.	Learn from (and together with) change agents to drive and accelerate your AI journey.
Training & learning	A portfolio of training and learning assets in different formats and tailored for different groups within your organization to focus on applied AI.	Train your leadership, management and data scientist teams in what it means to really integrate AI in the organization.
Tools & methods	A systematic AI implementation model for scaling up AI past the PoC stage. Supported by hands-on tools for finding and evaluating use cases and building AI portfolios.	Get past the PoC stage by starting to systematically work with AI and scale up your ambitions.
AI Catalyst Network	An exclusive network to share concrete experiences in how to work with AI transformation in organizations.	Learn from others and share your experiences to collectively be better at integrating AI in your organization.

[Read more about AI Transformation and our offerings.](#)

The Data Factory

Data quality and volume are keys to the performance of many AI models. Tools that are used to collect, manage and prepare data for training are developing rapidly.

Meanwhile, affordable and effective infrastructure system solutions to perform the training are currently at a low technical maturity and several approaches are being tested and implemented.

The Data Factory at AI Sweden provides exciting opportunities for our partners to bring their own data and infrastructure challenges to collaborate and to take part in existing projects and/or set up experiments in the testbed environment to understand how to invest in a successful system for developing competitive products featuring AI components.

More specifically, the Data Factory provides our partners with the opportunity to:

- explore novel/emerging data factory solutions (e.g. Edge Learning)
- create and share knowledge related to the establishment and use of data factories
- collaborate on the development of toolchains
- share and benefit from available datasets, models and benchmarks
- utilize storage and compute resources to train algorithms.



Partner offerings from The Data Factory

Offering	Description	Partner opportunity
AI training environment	Train proof-of-concept models using our fast GPU servers.	Access to at least one GPU-month per partner and year.
The Edge Lab & Edge Learning Initiative	Recognized as one of the most promising areas of innovation within AI. We will lead the development of Edge Learning at AI Sweden.	Join the edge learning consortium and develop this technology with world leading companies, and academia.
Testbeds	A possibility to set up infrastructure and/or tests to explore different data factory solutions.	Explore the testbed with other partners to get perspectives and ideas across sectors.
Compliance & competence	Experts meeting regularly addressing both legal and infrastructure challenges.	Join our existing expert groups to interact with peers in other partner organizations to learn across sectors.
Shared real-world data	Unique datasets provided by our partners for use in our data factory to train models and to test infrastructure and tool chains.	For example: Set up a hackathon on your dataset. Invite partners to collaborate in a neutral environment on your data.
Examples, models & solutions	Share and leverage learning to accelerate your development.	Profile yourselves as experts. Learn from other experts.

[Read more about The Data Factory.](#)

Applied AI – Strategic Initiatives & applied projects

AI Sweden's mission is to accelerate the use of AI for the benefit of our society, our competitiveness, and for everyone living in Sweden.

Simply put, we want to see AI applied in practice.

Our Applied AI team focuses on the operationalization of AI, making sure that AI methods can be used at scale in critical systems and in real-world scenarios and that AI systems can be developed efficiently and in a principled manner.

The team also coordinates and seeks funding for collaborative projects generating new results, solutions and learnings.

Furthermore, and in collaboration with research and development groups in Sweden and across the world, AI Sweden is currently building **Strategic Initiatives** with the objective to enable a new type of research environment, closely tied to concrete business needs in the private and public sectors.

The Strategic Initiatives aim to ensure Sweden has the ability to lead and contribute with internationally competitive cutting-edge research.

AI Sweden's access to competence, stakeholders, data providers and compute infrastructures fosters a truly agile and dynamic environment.

The Strategic Initiatives are funded by Vinnova and partners contributing with infrastructure, tools and personnel.

“ AI Sweden is like a gym – the more you work out, the faster you build your strengths. Working with others often gives me inspiration, access to new tools, and ideas that help me build my own strengths faster.”

Mats Nordlund,
Zenseact/AI Sweden

The partner offering from Applied AI

Offering	Description	Partner opportunity
Strategic Initiatives on Decentralized AI & Applied Language technologies	Strategic Initiatives at AI Sweden build cutting-edge, applied research in strategic areas for the operationalization of AI.	Invest in shared resources to build the research team. Invest in and benefit from infrastructure (e.g Edge Lab). Actively take part in collaborative projects.
Information Driven Healthcare initiative	Information Driven Healthcare is a long-term initiative funded by Vinnova aiming to transform Swedish healthcare towards being information driven and AI ready.	Actively engage in concrete projects related to information driven healthcare and/or get access to knowledge generated.
Portfolio of applied projects	AI Sweden currently has a project portfolio consisting of 20+ applied projects.	Learn from ongoing projects and be part of identifying and setting up new ones.
Project funding	AI Sweden has extensive experience of applying for project funding.	Collaboratively seek funding for projects and new initiatives.
Hackathons & challenges	Accelerate the use of AI by engaging the AI community in short challenge-driven project.	Co-create and host hackathons and challenges to solve real problems.

[Read more about our Strategic Initiatives and the project portfolio.](#)

[Read more about our strategic areas of Applied AI.](#)

[Read about a previous challenge \(hackathon\).](#)

Talent reinforcing partners' capabilities

The expansion of AI applications in both private and public sector is leading to a fast increase in the demand for AI experts.

Many companies and public organisations report delayed implementation of AI applications due to a lack of AI talent. This is also confirmed by many corporate partners of AI Sweden identifying the shortage of AI talent as the top challenge to their planned expansion on AI applications.

AI Sweden's effort related to talent reinforcing partners' capabilities was launched in August 2021. The main purpose is to make a contribution to our partners' ability to recruit more talent.

All talent programs developed directly or indirectly by AI Sweden aims to increase the talent pool for AI Sweden's partners.

Within its talent programs, AI Sweden develops activities with the purpose of

- growing the national talent pool
- attracting and sourcing international talent
- boosting talent with knowledge, best practices, and a network of people with similar challenges and solutions.



The following talent programs will start during fall 2021

Program	Description	Partner opportunity
Young Talent program	8 young machine learning talents will work with AI Sweden and partners starting Sep 2021. New recruitment 2022.	Partners will be invited to pitch projects to run Spring 2022
Junior AI Change Agents	10 students from Hyper Island's education called AI Business Consultants join AI Sweden for an 8 month internship. Start Oct 2021	Conduct an assessment of AI Maturity and involvement in partners projects
International graduate program	18-months program in rotation between a minimum of 3 partners. First program starting Oct 2021	Recruitment of international talent
Systems Engineer program	Recruitment program starting with 3 months dedicated to training. In development, start late Autumn 2021.	Recruitment of talent
Talent attraction team	Group of partners jointly developing talent attraction programs	Influence AI Sweden's priorities

The Talent programs are typically built by and for the partners with groups of partners initiating and funding them.

Specific programs may also be set up in specific geographies according to partners' needs.

[Stay up to date about our talent programs.](#)

Leadership for scientific, technological and societal advancement

Sweden is a country where public organizations have great autonomy and operate in a decentralized model of society.

Because of this, resources and initiatives are often fragmented. This is part of the reason behind AI Sweden's focus on investing together and sharing with many.

Given this decentralized starting point, it is even more important to allocate investments where they can make the highest possible impact.

In a world that is ever more competitive, AI Sweden works hard to push the boundaries of applied AI, taking a lead in some specific areas that we believe will be of great benefit to Sweden.

Decentralized AI and language technologies are but two examples of this. It is also imperative to explore what policy and organization a country needs to reap the benefits of applied AI.

These objectives can only be achieved through a close dialogue with public decision makers and an active engagement with the best AI ecosystems around the world.



Public affairs

Governments around the world realize the need to allocate significant funds for AI education, research and innovation to ensure its industry can stay competitive and its public sector can provide better services to citizens.

The Global AI Index,* which ranks the depth of commitment from national governments to artificial intelligence in terms of spending commitments and national strategies, puts Sweden in 38th place for its current overall government strategy.

The way we see it, AI holds the potential to both help Sweden stay competitive and to develop one of the best democratic societies in the world.

As such, AI Sweden actively engages with political parties, government officials and government agencies to:

- raise awareness and knowledge about the benefits and consequences of the AI revolution, and how to harness its potential for the benefit of our economy, democracy and society as a whole
- provide input for policy development and legislation, to the benefit of our society and its citizens as well as enhancing Sweden's competitiveness.

AI Sweden also aims to coordinate partners across sectoral boundaries to allow for discussions and actions that may benefit Swedish society.

One such initiative is the partner collaboration on the AI Act, as proposed by the European Commission.

In addition, AI Sweden is one of the main organizers of the new summit and program **Future of Democracy**. We hope that this summit will inspire great leadership among decision-makers on how we choose to let AI impact our society.

[Read more about Future of Democracy.](#)

* <https://www.tortoisemedia.com/intelligence/global-ai/>

International relations and benchmarking

Another essential aspect of providing leadership for scientific, technological and societal advancement is to benchmark against, and learn from, the best around the world.

As part of AI Sweden's promise to partners, international activities and relations are important from several perspectives, not least:

- to ensure excellence on an international level by benchmarking our initiatives and by building relations with the best ecosystems in the world
- to generate exceptional knowledge creation by collaborating with some of the best research environments in the world
- to attract international talent by active outreach in relevant ecosystems
- to support partners seeking collaboration with the best, whether nationally or internationally.

The international strategy and mindset of AI Sweden is defined as follows.

AI Sweden will prioritize collaboration with outstanding and well-recognized individuals, organizations and ecosystems that have mutual interest in AI Sweden's general mission, i.e. accelerating the use of applied AI in the private and public sector.

Collaboration should be sought with partners (academic, private, and public) that add a specific value, and who are recognized for their excellence of applied research & development, innovative projects and/or their ability to bring new expertise and resources that can add to the core areas and strengths of Sweden.

AI Sweden's international activities are growing rapidly. Here are but a few concrete examples:

- in 2020 we started to map French, German and Swedish AI Startups together with partners in Germany and France
- in 2021 we launched the AI Maturity assessment tool that we adopted from a partner in Germany
- during fall 2021, AI Sweden will establish its own presence in Montreal, one of the leading AI research ecosystems in the world
- a number of international research organizations see value in collaborating with AI Sweden, not least thanks to our Edge Lab. Researchers at MIT and TU Munich are examples of international collaborators recently involved in our activities.



Partner commitment

Since AI Sweden was established in 2019, we have seen a clear trend in our partners' level of investment in AI. The organizations who best understand AI are also investing the most (as confirmed by international reports).

AI Sweden's ability to accelerate the use of AI depends on our partners' engagement, contributions and active involvement.

All AI Sweden activities are designed and developed together with partners and are intended to generate value for the partners and the Swedish AI ecosystem.

An individual partner generates value from partnering with AI Sweden by actively engaging with the AI Sweden team and other partners.

One partner's contribution is valuable for others and leads to a pay-it-forward culture where all partners eventually generate more value for themselves than their actual contribution.

Without this commitment the value of the partnership with AI Sweden will be limited.

- **By participating in networks with peers across sectors, you gain new perspectives.**
- **By using shared AI models, you can take leaps forward and move faster than before.**
- **By harnessing the resources of the Data Factory, you can speed up the acquirement of knowledge needed to purchase infrastructure or advance model training.**
- **By embracing the mindset of AI Transformation, you can help align your organization.**
- **By actively participating in talent programs or by being matched with a startup providing an interesting solution, you can find new talent.**

Making the most of your partnership with AI Sweden will over time accelerate your use of AI.

To make this happen as fast as possible, AI Sweden appoints a Partner Manager for each partner.

The Partner Manager is there to help the partner and the partner's teams to use AI Sweden's offering and make the most out of the partnership.

Partnership model

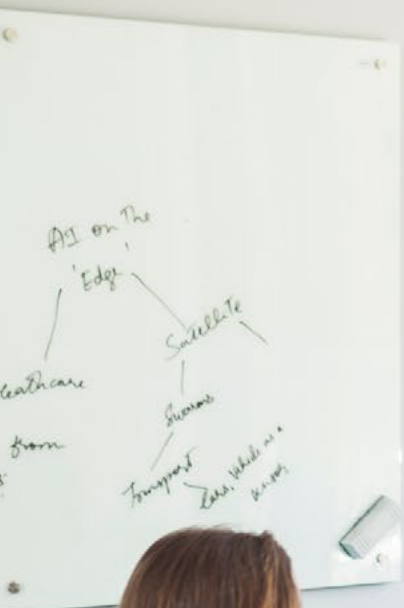
Besides funding from Vinnova and the regions/municipalities funding our regional teams, all partners are asked to contribute to AI Sweden on an annual basis.

The annual fees and other contributions [are listed on the web version of the Partnership model](#).

Starting 2022, the partnership runs for each calendar year with automatic extension if not cancelled with six months notice. Partners joining during the second half of a calendar year commit to the remaining part of that year and the following year. Investments for specific programs or projects are managed separately.

Organizations apply to become partners. AI Sweden's Steering Committee approves new partners on a quarterly basis.

[Read more about AI Sweden's governance structure](#).



About AI Sweden

AI Sweden is the Swedish national center for applied artificial intelligence (AI), supported by Vinnova, Sweden's innovation agency, and a cross-section of partners from both private and public sectors as well as academia.

AI Sweden's mission is to accelerate the use of AI for the benefit of our society, our competitiveness, and for everyone living in Sweden.

The AI Sweden partnership program was established in early 2019 and has since grown to over 100 partners, actively engaged in generating value for their own and their communities' success.

The core team of AI Sweden consists of 50 people across offices in nine cities throughout Sweden. An international presence is being developed.

The AI revolution will profoundly impact our economy, democracy, and society as a whole. Much remains to be learned about the power and limits of AI technologies and significant investments are necessary in all sectors of society to stay competitive and improve services to consumers/citizens.

Mindset, organizational structure, and access to competence and talent have all surfaced as major hurdles for all kinds of organizations in their ambition to use AI to generate value for their businesses, customers, consumers, or citizens.

AI Sweden exists to support its partners in their journey towards using AI transformatively. We strive to provide leadership and shareable knowledge and resources, as well as attracting and boosting talent and reinforcing our partners' capabilities.

AI Sweden calls on the Swedish ecosystem to invest together and share with many. A mindset we believe will contribute to Sweden staying competitive and developing one of the best democratic societies in the world.

Read more at ai.se.

